

140MP Motor Protection Circuit Breaker



Basic Short Circuit and Thermal Protection

Features and Benefits

- Overload protection – trip class 10A
- Phase loss sensitivity
- Disconnect function
- Suitable for three- and single-phase application
- UL group motor and IEC Type 1 and Type 2
- CE, cULus, CCC, KC, EAC Certification
- Interrupting rating @ 400V: up to 100 kA



Overview

Bulletin 140MP Motor Protection Circuit Breakers (MPCBs) or Motor Protective Switching Devices (MPSD) provide magnetic short circuit and thermal overload protection up to 32 A. They are tested in combination with Allen-Bradley® Bulletin 100-C and 100-K contactors to create two component motor starters.

These are UL listed as Manual Motor Controllers (with optional approvals for Suitable as Motor Disconnect and Suitable for use in Group Installation). Group motor installations eliminate the need for individual branch short circuit protective devices for each motor circuit, reducing panel space, installation & wiring time, and costs. There is only one Branch Circuit Protective Device (BCPD) for the “Group”.

These devices meet requirement of Motor Protective Switching Devices (MPSD) as per IEC 60947-4-1 and Circuit Breaker as per IEC 60947-2 standard for application outside of North America. These devices may provide following functions.

- Disconnect for Motor Branch Circuit
- Short-Circuit Protection (Magnetic Protection)
- Overload Protection (Thermal Protection)
- Manual Switching (Motor Control Means)

Magnetic short circuit and thermal overload protection up to 32 and tested in combination with Allen-Bradley Bulletin 100 contactors

Ratings

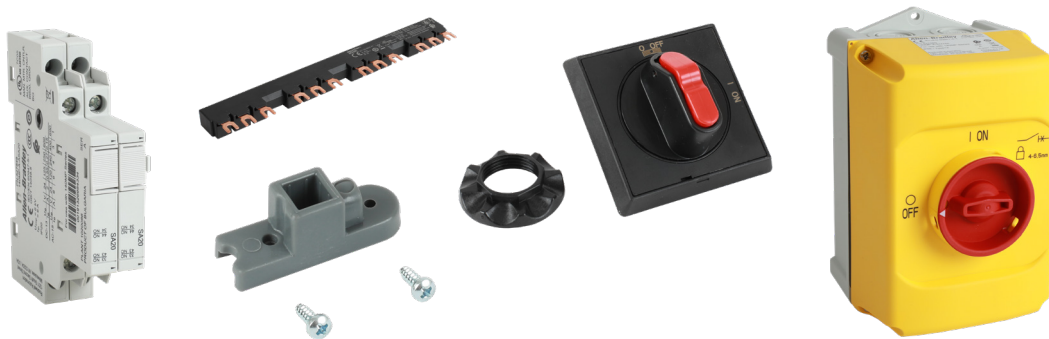
Rated Operational Current (I_n) [A]	Motor Current Adjustment Range [A]	Nominal Magnetic Trip Current [A]	Max. Short Circuit Current [kA]		Max. 3-phase Hp Ratings*				Max. kW, 3-Phase – AC-3*				Cat. No.
			400V (Icu)	480V	200V	230V	460V	575V	230V	400/415V	500V	690V	
0.16	0.10...0.16	2	100	30	–	–	–	–	–	0.02	0.06	0.06	140MP-A3E-A16
0.25	0.16...0.25	3.1	100	30	–	–	–	–	–	0.04	0.09	0.09	140MP-A3E-A25
0.4	0.25...0.40	5	100	30	–	–	–	0.25	0.06	0.09	0.12	0.18	140MP-A3E-A40
0.63	0.40...0.63	7.9	100	30	–	–	0.25	0.33	0.09	0.18	0.18	0.25	140MP-A3E-A63
1	0.63...1.0	12.5	100	30	–	–	0.5	0.75	0.18	0.25	0.37	0.55	140MP-A3E-B10
1.6	1.0...1.6	20	100	30	0.25	0.33	1	1	0.25	0.55	0.75	1.1	140MP-A3E-B16
2.5	1.6...2.5	31.3	75	30	0.5	0.75	1.5	2	0.37	0.75	1.1	1.8	140MP-A3E-B25
4	2.5...4.0	50	75	18	1	1	–	–	0.75	1.5	2.2	3	140MP-A3E-B40
6.3	4.0...6.3	78.8	50	18	1.5	2	5	5	1.5	2.2	3	3	140MP-A3E-B63
10	6.3...10	150	50	18	3	3	7.5	10	2.2	4	6.3	7.5	140MP-A3E-C10
12	8.0...12	180	50	18	3	3	7.5	10	3	5.5	6.3	7.5	140MP-A3E-C12
16	10...16	240	15	18	5	5	10	15	4	7.5	10	13	140MP-A3E-C16
20	16...20	300	15	18	5	7.5	15	20	5.5	10	11	17	140MP-A3E-C20
25	20...25	375	15	18	7.5	7.5	20	20	5.5	11	15	22	140MP-A3E-C25
32	25...32	480	15	18	7.5	10	25	30	7.5	15	20	25	140MP-A3E-C32





* Horsepower/kW ratings show are for reference. The final selection of the MPCB / MPD depends on the actual motor full load current.

A full range of compatible accessories are also available, including:

- Feeder Terminal Block and Compact Bus Bars
- Normally open and normally closed front and side mounted auxiliary contacts
- Shunt trip and under-voltage trip auxiliary contacts
- Door coupling handles
- IP65 enclosure (UL/CSA Type 12)

For additional details on accessories and specifications please see technical data on ab.com



Connect with us.    

rockwellautomation.com — expanding human possibility™

AMERICAS: Rockwell Automation, 1201 South Second Street, Milwaukee, WI 53204-2496 USA, Tel: (1) 414.382.2000, Fax: (1) 414.382.4444
 EUROPE/MIDDLE EAST/AFRICA: Rockwell Automation NV, Pegasus Park, De Kleetlaan 12a, 1831 Diegem, Belgium, Tel: (32) 2 663 0600, Fax: (32) 2 663 0640
 ASIA PACIFIC: Rockwell Automation, Level 14, Core F, Cyberport 3, 100 Cyberport Road, Hong Kong, Tel: (852) 2887 4788, Fax: (852) 2508 1846

Allen-Bradley and Expanding human possibility are trademarks of Rockwell Automation, Inc.
 Trademarks not belonging to Rockwell Automation are property of their respective companies.